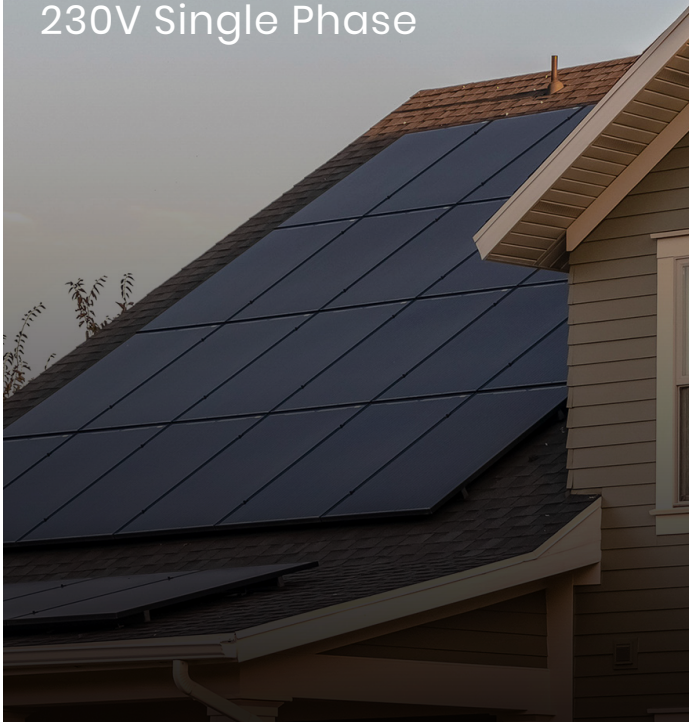


Split Phase Hybrid Inverter

120/240V Split Phase
208V 2/3 Phase
230V Single Phase



SPZ 7.5KW-LV	5KW AC	7.5KW PV
SPZ 12KW-LV-B	8KW AC	12KW PV
SPZ 15KW-LV	10KW AC	15KW PV

Spitzer Energy Storage Hybrid Inverter (Split-Phase)

Spitzer Energy's Storage Hybrid Inverter works with solar, batteries, the grid, and external generators. We support grid-tied solar, battery supported utility rate reduction, and emergency back-up options including on-grid and off-grid solutions.

Key Features

Excellent Performance

- Maximum efficiency 98.0%, battery efficiency 94.5%
- Maximum 15kW PV input power, continuously 10% output overload
- Maximum Charge/Discharge current 210A
- Large MPPT current, compatible with high-power solar panels
- Advanced parallel function

High Reliability

- Key components from international famous brands
- IP65 protection rating, good adaptability to complex outdoor environment
- Multiple protections built-in, AFCI, RSD

Safe & Reliable

- Standard Warranty (5 yrs) Extended (10 yrs)
- Passed UL1699B, IEEE1547, SRD V2.0, UL1741 SB, CEC, UL9540



Technical Specifications

Spitzer Energy Storage Hybrid Inverters (Split-Phase)

Technical specification	SPZ 7.5KW-LV	SPZ 12KW-LV-B	SPZ 15KW-LV
AC output			
Rated output power (kVA)	5,000W	8,000W	10,000W
Max. apparent Power (kVA)	5,500VA	8,800VA	11,000VA
Max. output current (A)	25	40	50
Ac output voltage (V)	120/240(split phase), 208(2/3 phase), 230 (single phase)		
Frequency (Hz)	60		
PF	>0.99 @ rated power (adjustable 0.8 LD-0.8 LG)		
THDi	<3%		
Input (PV)			
Max. power (kW)	7,500W	12,000W	15,000W
Max. DC voltage (V)	600		
MPPT voltage range (V)	70~540		
Max. Input current of single MPPT (A)	30A/22A	30A/22A/22A	30A/22A/22A
Max. short circuit current (A)	40A/30A	40A/30A/30A	40A/30A/30A
Nos. of MPPT	2	3	3
MPPT tracker/strings	4 strings	6 strings	6 strings
Battery			
Nominal battery voltage (V)	48V		
Battery voltage range (V)	40V~64V		
Max. charge/discharge current (A)	210A/130A	210A/180A	210A/210A
Max. charge/discharge power (W)	10,000W/5,000W	10,000W/8,000W	10,000W/10,000W
Battery type	Lithium-ion /Lead-acid		
Output (Back-up)			
Nominal output power (W)	5,000W	8,000W	10,000W
Nominal output current (A)	20.9A	33.4A	41.7A
Peak power (1s)	10,000VA	16,000VA	20,000VA
Nominal output voltage (V)	120/240(split phase), 208(2/3 phase), 230 (single phase)		
Nominal output frequency (Hz)	60Hz		
Transfer time	10ms		
THDV	<3% @ 100 R load		
General data			
Max. efficiency (PV to AC)	98%		
Max. efficiency (BAT to AC)	94.5%		
CEC efficiency	97%		
Ingress protection	IP65		
Operation temperature (°F)	-13°F ~ 149°F (>113°F Derating)		
Cooling	Fan air		
Relative humidity	0 ~100%		
Operation altitude (m)	2,000		
Dimensions W *D *H	16.54" x 1.5" x 9.45"		
Weight (lb)	81.57 lbs		
HMI & COM / Certification			
Display	LED + App		
RS485/Can (for BMS), DRM/RS485 (for Meter), RS485 Optional: Wi-Fi/GPRS/LAN			
Safety standard	UL1741, CSA C22.2, UL1699B		
EMC	FCC Part 15, Class B		
On-grid	UL1741 SB, IEEE1547:2018, HECO SRD 2.0, UL9540, CEC		
Warranty	5 years (Standard) / 10 years (Optional)		

Technical Specifications

Spitzer Energy Storage Hybrid Inverters (Split-Phase)

Protection	SPZ 7.5KW-LV	SPZ 12KW-LV-B	SPZ 15KW-LV
AC output			
Protection category		Class I	
DC switch		Yes	
Anti-islanding protection		Yes	
AC over current protection		Yes	
AC over voltage protection		Yes	
DC reverse protection		Yes	
Surge arrester		DC Type II, AC Type II	
Insulation detection		Yes	
Leakge current protection		Yes	
AFCI		Yes	
RSD		Support (MLRSD Sunspec)	

